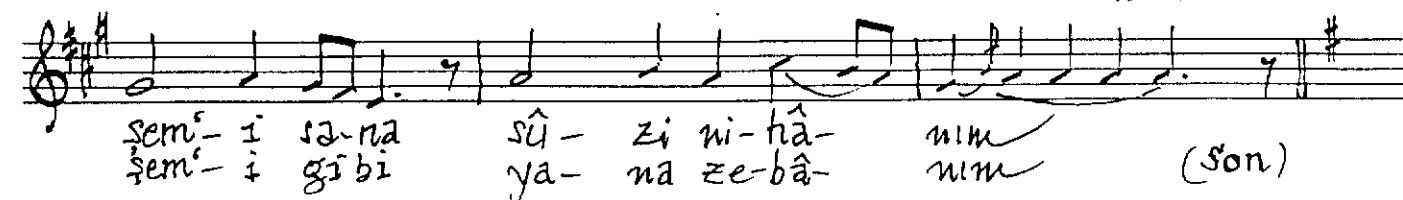
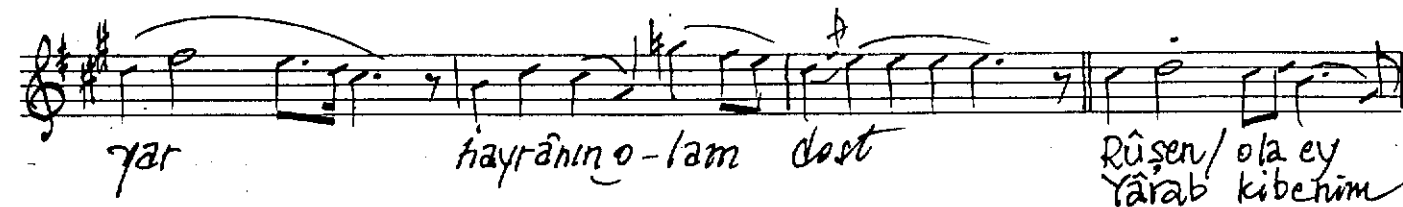
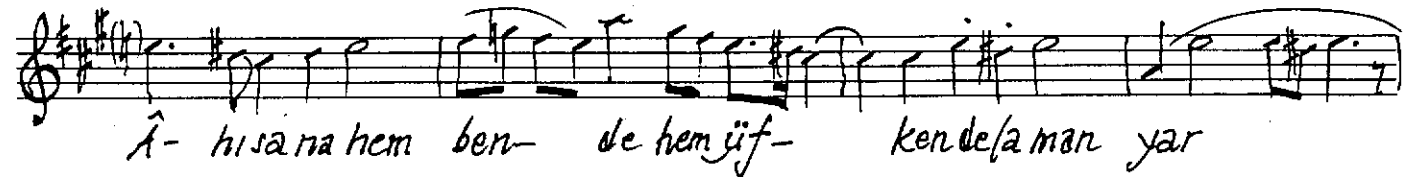
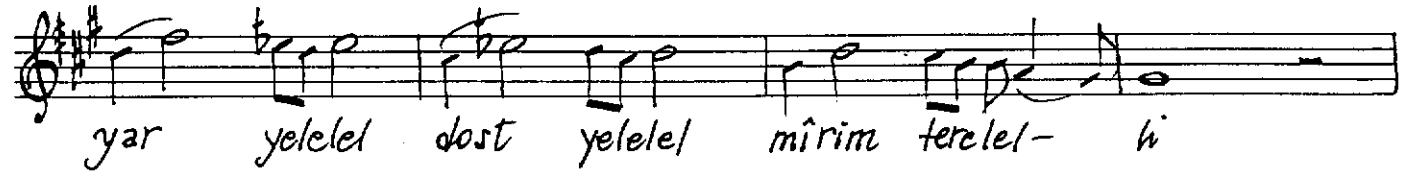
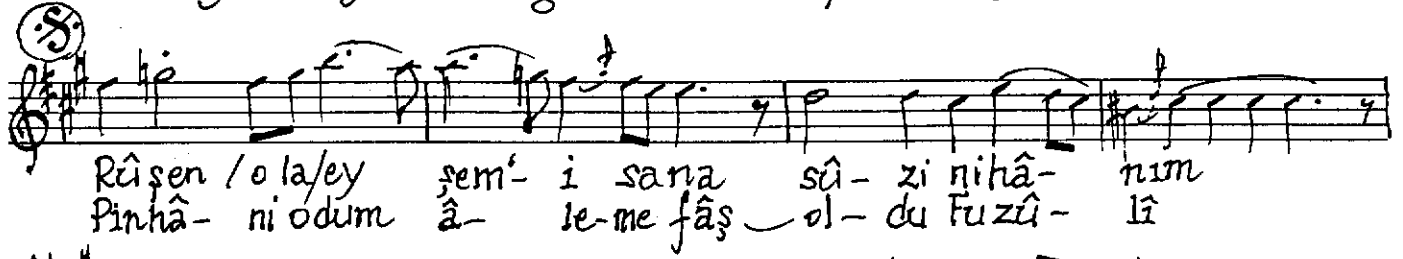


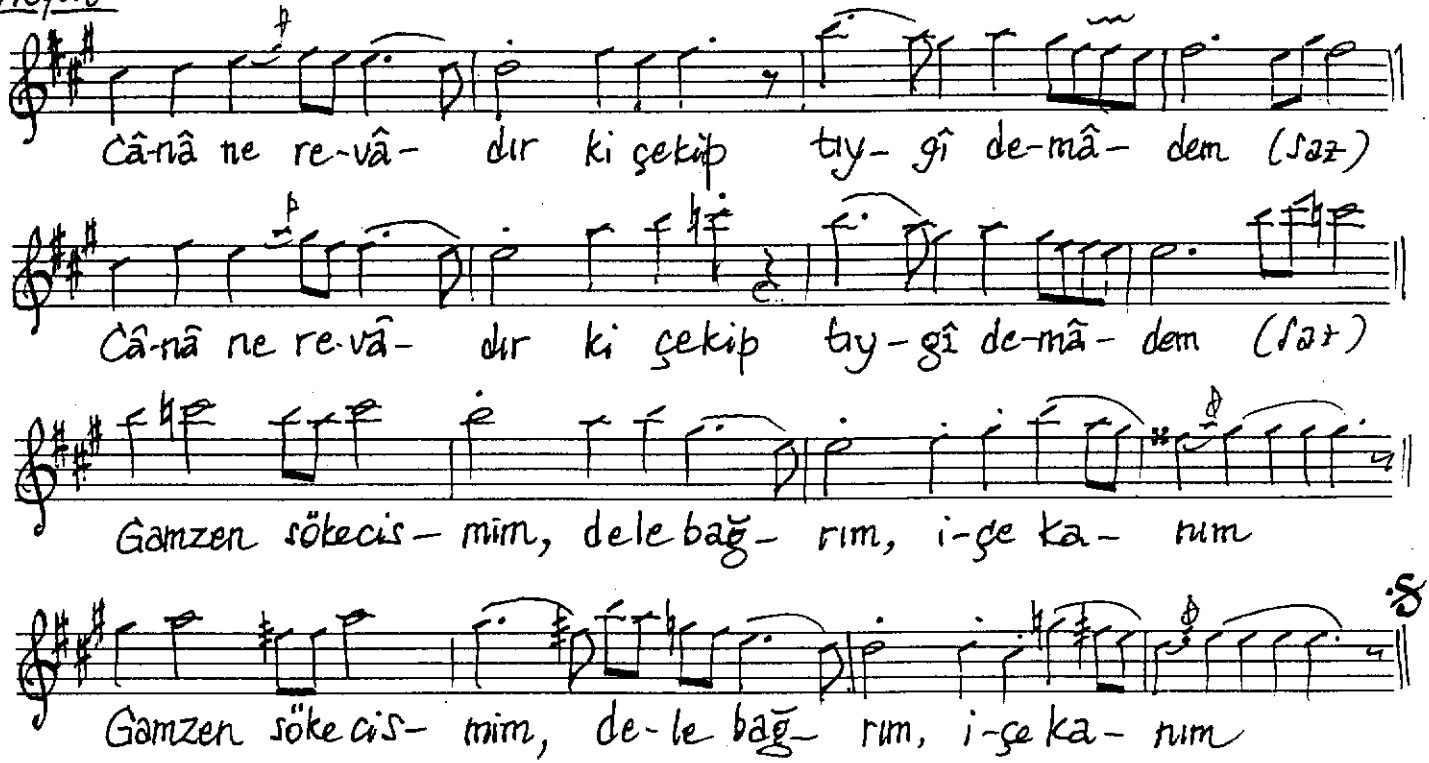
NIŞÂBUREK NAKİŞ YÜRÜKSEMÂİ

Güfte: Fuzûlî
Beste: C. Tanrikorur

Yürüksemâî
(J = 144)



Meyan



Cânâ ne re-vâ- dir ki çekip tıy- gî de-mâ- dem (saz)

Cânâ ne re-vâ- dir ki çekip tıy- gî de-mâ- dem (saz)

Gamzen söke cis- mım, de-le bağ- rım, i-ge ka- rum

Gamzen söke cis- mım, de-le bağ- rım, i-ge ka- rum

Hicrân ile yânar geceler rişte-i cânım,
Rûşen ola, ey şem, sana sûz-i nihânım ..

Cânâ, ne revâdır ki çekip tıygî demâden,
Gamzen söke cismim, de-le bağrım, i-ge kânım ? !

Pinhani od'um âleme fâş oldu Fuzûlî !
Yârab ki benüm şem' gibi yâna zebânım ..

F u z û l î